

STARBUCKS



Directions to the run:

Starbucks - Leesburg, Market Street (531 East Market Street, Leesburg, VA). Near corner of Market and Plaza.

Description of run:

There is no excuse to miss the Starbucks run! The course is out and back on the W&OD with a water stop at the 6 mile (round trip) turn-around, but shorter or longer distances are definitely options. This run usually draws a good crowd and is perfect for the beginning runner. Stay for coffee afterwards!

Hill Rating: 1 (mostly flat)

Surface: P (all pavement)

Route: – 6.06 miles

Starting at the Market Street Starbucks, exit shopping plaza onto Plaza Street.

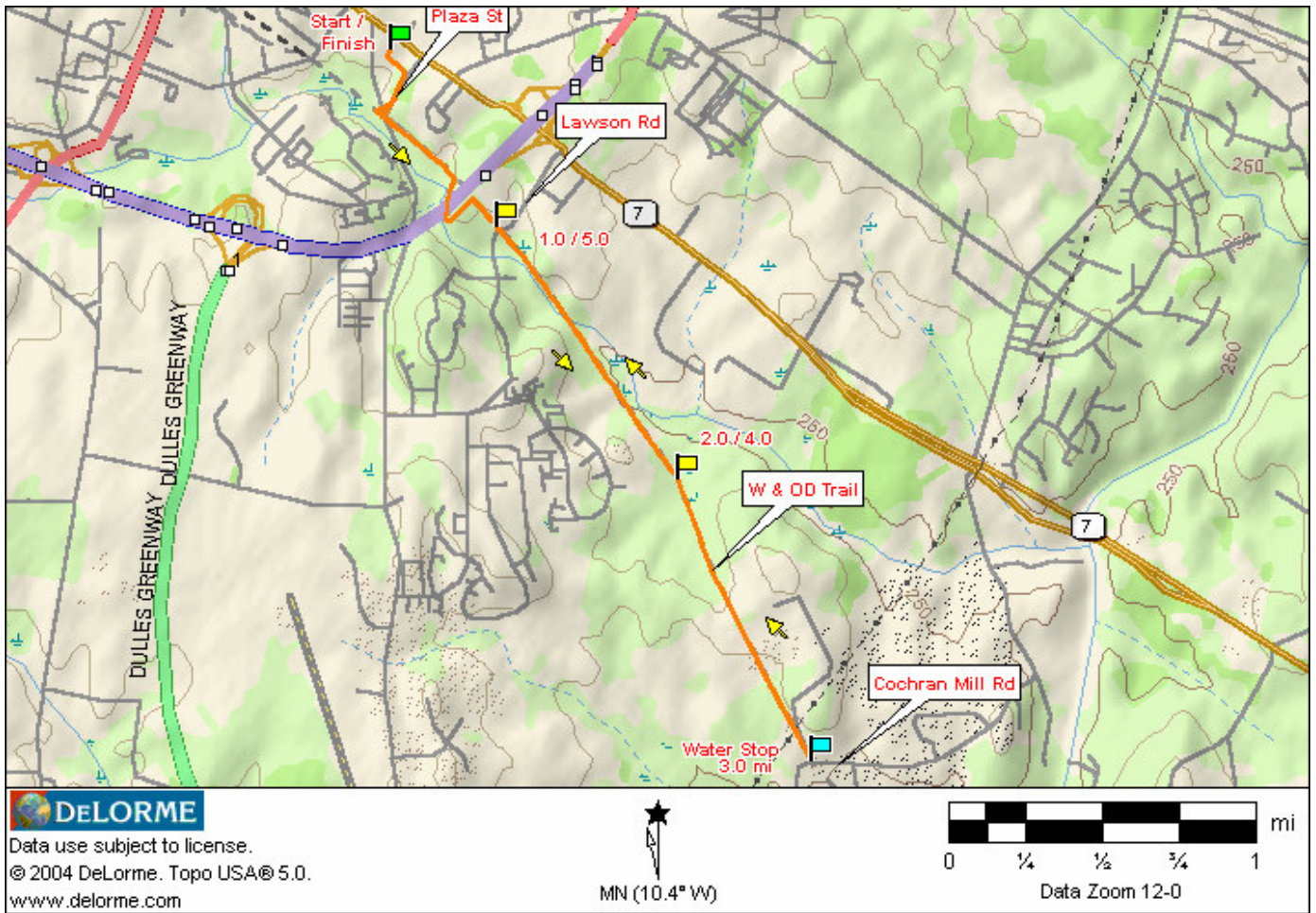
Make a right onto Plaza Street and follow to the W & OD Trail.

Make a left onto the W & OD Trail and follow it past W & OD mile marker 31 to Cochran Mill Road, turn around and return to Starbucks.

Water can be accessed via a water fountain at the intersection of the W&OD trail and Lawson Road.

The run can easily be extended. The W & OD Railroad Regional Park runs 45 miles from Purcellville, VA to Shirlington, Arlington, VA.

Map of run:



Elevation:

